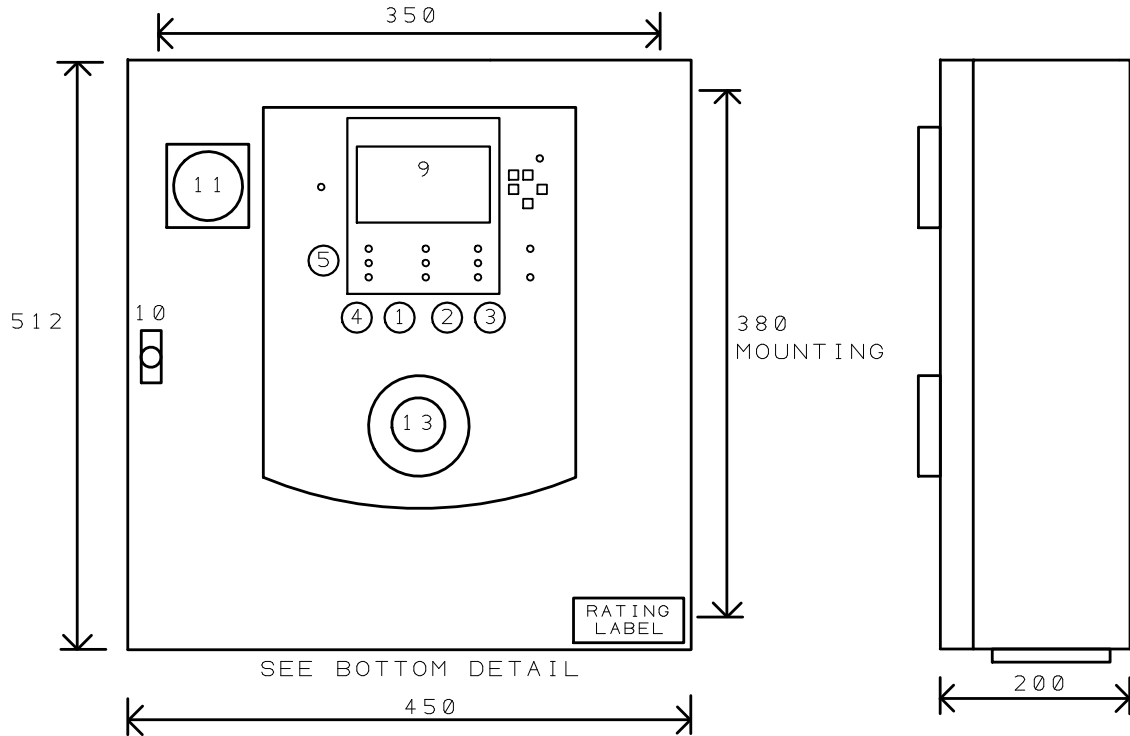


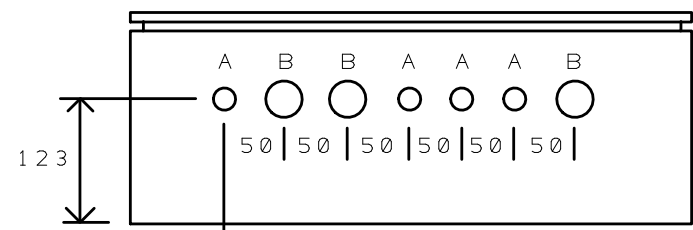
A B C D E F

EXTERNAL VIEW



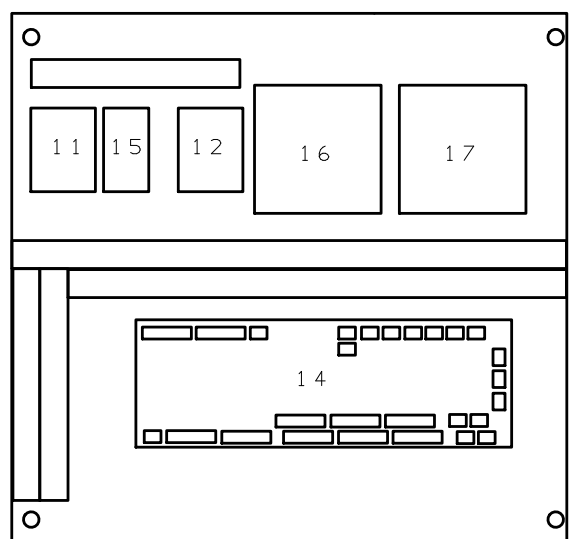
ITEM	DESCRIPTION
1	MANUAL START A P.B
2	MANUAL START B P.B
3	MANUAL STOP P.B
4	TEST START P.B
5	MODE SWITCH
6	.
7	.
8	.
9	GRAPHIC DISPLAY
10	DOOR CATCH
11	AC ISOLATOR, SW1
12	MAINS FILER, FI1
13	EMERGENCY START P.B, PU1
14	INTERFACE I/O BOARD
15	CIRCUIT BREAKER Q1
16	CHARGER 1
17	CHARGER 2

BOTTOM DETAIL



A=20.7mm (PG13.5) DIA. KNOCK OUT  
 B=28.6mm (PG21) DIA. KNOCK OUT

INTERNAL VIEW



NOTE:  
 CONTROLLER MUST BE MOUNTED  
 USING A. V MOUNTS

WEIGHT 15KG  
 RATING: IP65  
 MATERIAL: 1.3MM SHEET STEEL  
 FINISH: SMOOTH WALL, RED

PROJECT: H100-840 LPC-EN DIESEL		HARRIJESS LTD GRANTHAM ENGLAND
DRAWING TITLE: GENERAL ARRANGEMENT		
DRAWN BY: DAVID CARTER		REVISION: 1
SHEET: 1 OF 1	STATUS: PRODUCTION	
DATE: 14/07/2022	<HARRIJESS>	DG048 rev01

DO NOT SCALE